



Maxi Walk in Kennel Door

Description

This style of door has a central horizontal transom with stainless steel bars above and a panel below. The door can be fitted with either glass or solid Trespa High Pressure laminate at the bottom. Glass can be clear, frosted or opaque.

This lower panel can be ventilated if required.

The glass and Trespa panels are fixed in place using the Stellvet glazing system which allows for easy replacement unlike bonded in systems.

As an option the door can be provided with an optional rail fitted to the central transom that accepts infusion pumps.

Door frames and bodies are manufactured out of 304 grade stainless steel with a brushed finish. Glass is toughened for safety and the Trespa panels are supplied in white as standard but with a range of colours available as options.

All doors are supplied with a three-sided frame for Health & Safety reasons, so that there is no lower horizontal bar to cause a trip hazard. Doors are also fitted with a safety release latch that prevents staff members from becoming trapped.

The doors can be specified with a wide variety of options including closing trim panels, ventilation panels, door restraining straps, high security locks and magnetic latches and locks (no safety release).

Doors are provided complete with frames, hinges and safety release latch as standard. The standard size is 780mm wide by 2000mm high, however any size can be specified to suit individual requirements.



Correct at time of going to press - Stellvet reserves the right to change the specification

STELLVET CONTACT DETAILS

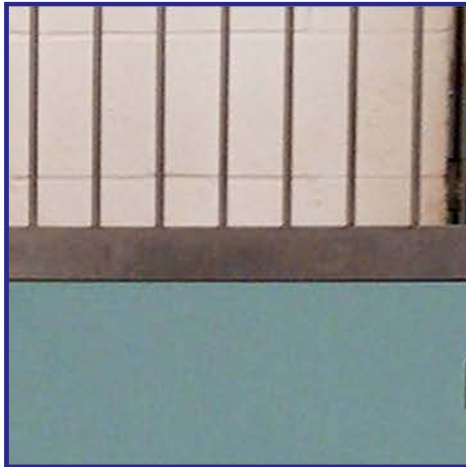
Phone: 01670 760082

Website: www.stellex.com

Email: sales@stellvet.com



Half Bar Half Panel



Safety Release Latch



Stellvet Glazing System



Features and Benefits

Feature

- 304 grade stainless steel construction
- Satin brushed finish
- 30mm box section construction
- Half bar/half panel construction
- Safety release latch
- Stellvet glazing system
- Toughened glass
- Three-sided frame

Benefit

- High levels of corrosion resistance
- Offers a smooth easy to clean surface
- Very strong and durable
- Allow good air flow circulation
- Avoids staff being trapped
- Allows panels to be quickly replaced
- Provides strong, hygienic and safe accommodation
- Avoids trip hazard

Options

- Custom sizes available
- Lower Trespa panel
- Lower panel ventilation holes
- High security locks
- Magnetic latches
- Door restraining straps
- Infusion pump rail
- Closing trims

Technical Data

Physical Sizes

Size

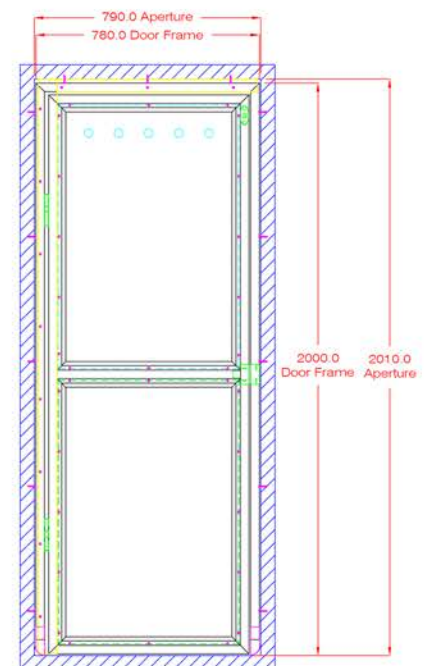
- Height (mm) 2000
- Width (mm) 780

Aperture Size

- Height (mm) 2010
- Width (mm) 790

Fixing Method

4 x 12mm diameter holes
(2 per side) in vertical frame
uprights



Correct at time of going to press - Stellvet reserves the right to change the specification

STELLVET CONTACT DETAILS

Phone: 01670 760082

Website: www.stellex.com

Email: sales@stellvet.com