



A monolithic block effect made from a thin concrete.

## POWER OF HEALTH

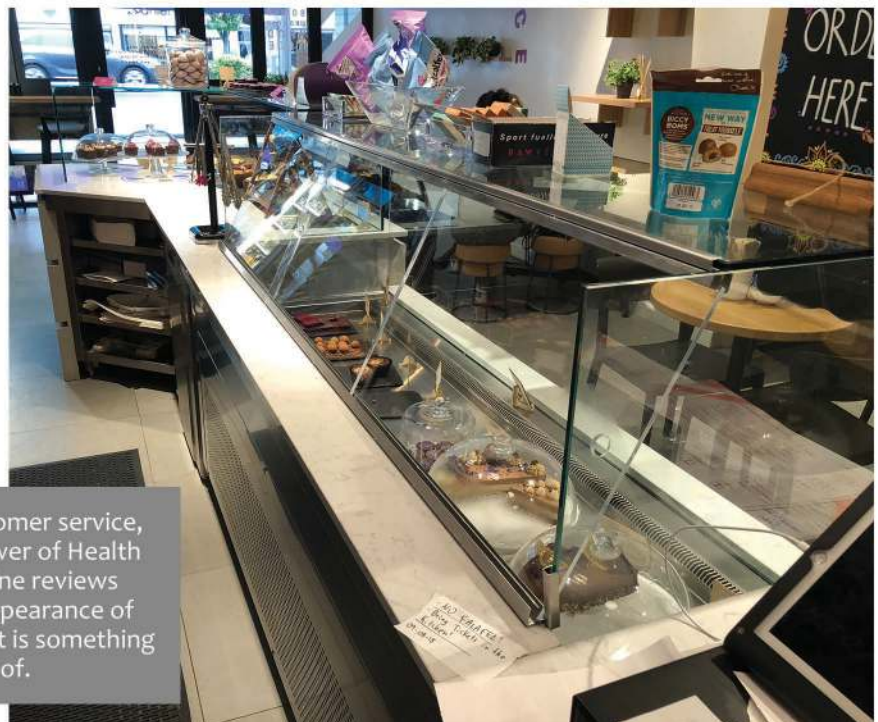
Reading online reviews of this amazing new restaurant in London, many refer to the interior and fittings as well as the great food. One reviewer described it 'As a great place to chill out'.

Standards at the Power of Health are very high and not just in their food preparation and service. A specific style and appearance needed to be created and Stellex's reputation for delivering such projects on time, on budget and exceeding clients expectations made them the perfect partner.

A very unusual deli counter was to be created using a thin concrete effect frontage which was very specific and very challenging to work with. A monolithic block effect was employed which contrasted well with a marble top. A bespoke drop-in deli counter was then fitted.

To complete the customer interaction area, a UV bonded glass blown air refrigerated deli display cabinet was incorporated in the counter opposite.

The whole installation was extremely challenging with everything being produced in sections due to a narrow doorway and the entire installation took place in one day. Yet again Stellex were delighted to rise to the challenge.



Food, quality of ingredients, customer service, and the whole appearance of Power of Health are to the highest standards. Online reviews often mention the interior and appearance of this amazing new restaurant. That is something everybody involved is very proud of.