

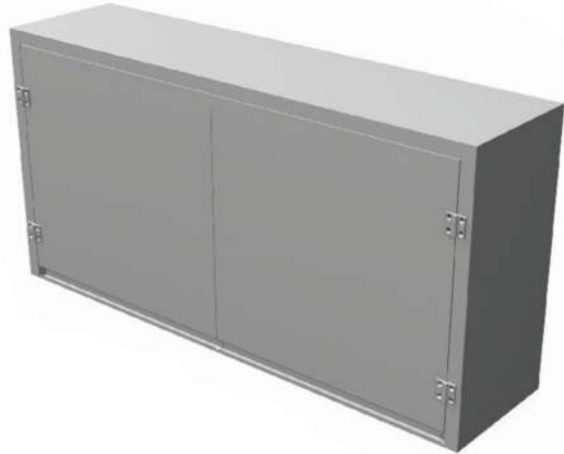


## WALL CUPBOARDS

### DESCRIPTION

Wall cupboards are manufactured entirely from stainless steel grade 430. Complete with hinged stainless steel doors and removable and adjustable stainless steel mid shelf.

Door locks are available as an option.



### FEATURES AND BENEFITS

#### Feature

- Stainless steel construction
- Satin brushed finish
- Stainless steel body
- Adjustable & removable mid shelf
- Integrated handles
- Heavy duty hinged doors

#### Benefit

- High quality stainless steel used throughout for corrosion resistance
- Offers a smooth easy to clean surface
- Heavy duty for strength and longevity
- Allows for easy cleaning & adaptability
- Smooth, sleek appearance and ease of cleaning
- Smooth & secure operation

### OPTIONS

- Door locks
- Sliding doors

### TECHNICAL DATA

#### Physical Sizes

##### Size

- Length (mm) 900 / 1000 / 1100 / 1200
- Width (mm) 300
- Height (mm) 600

Correct at time of going to press - Stellex reserves the right to change the specification

#### STELLEX CONTACT DETAILS

Address: Stellex, Hadston Industrial Estate, Hadston,  
Morpeth, Northumberland, NE65 9YG

Tel: 01670 760082 - Email: [sales@stellex.co.uk](mailto:sales@stellex.co.uk)  
Web: [www.stellex.co.uk](http://www.stellex.co.uk)